

MILDRED HELMS ELEMENTARY MESSENGER

December 2023



PRINCIPAL'S POINTS OF PRIDE

Dear Mildred Helms IB Families,

Happy Holidays to all our families! We wrap up the first semester on December 21st with so much to celebrate. Our school was selected for the Dreambox Math School of the Month for all of Area 2!

Congratulations to all our scholars for showing increased usage and growth in Dreambox. Keep up the great work!

Our winter concert will be held on Thursday December 14th in the Dolphin Cafe/Multi-Purpose room. Mrs. Clemens will lead our first grade scholars and our 4th and 5th grade Dolphin Chorus in creating a Winter Wonderland. We hope that you can join us for this joyful event.

We will hold our Discovery Night on Thursday, December 14th at 5:30 pm. Please share this information with families who would like to be part of our IB Magnet Program. We will share our way of work and enjoy a campus tour ending with a question and answer session to provide additional information for families making their decision for the 2024-2025 school year. Additional information can be found on the District Website under District Application Programs. Please contact Mrs. Kelly, our Magnet Coordinator, with any questions regarding our IB Program.

Winter Break with no school for students starts Friday, December 22nd through Friday, January 5th. Scholars return on Monday, January 8th to begin 2nd semester. We highly encourage our scholars to continue building their academics through the myON Winter Break Reading Challenge and the Dreambox Math Challenges.

We hope you enjoy Winter Break with family and we send you all wishes for a safe and joyful holiday season.

Respectfully yours,
Mrs. Brennan

Save the Date!

12/14/23 Winter Concert

1/24/24 Literacy Night

2/12/24 Kindness Week

3/27/24 PYP Exhibition /
International Showcase

See you there!

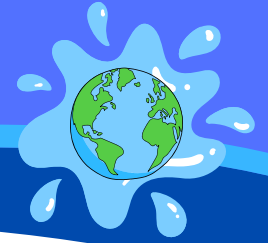
Mrs. Cooper's Corner

It is hard to believe that we are nearing the end of our first semester of learning and my first semester here at Mildred Helms! What an amazing semester it has been to get to know our students and so many of you and to watch the amazing progress they have made!

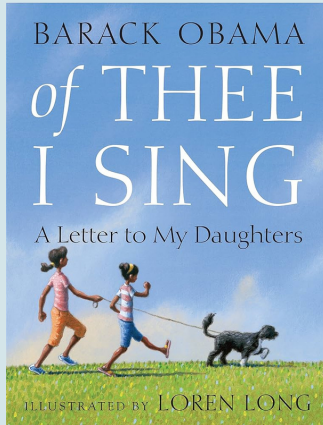
Our scholars have been working hard and it is once again time for our state progress monitoring with our FAST PM2 testing in December. You will receive results this month for both Reading and Math as an update from your students PM1 scores.

Our PBIS (Positive Behavior Intervention System) party and store shopping for the end of Quarter 2 is fast approaching. Thank you so much to all that have so generously donated items! Our students are so excited to shop with their hard earned IB bucks they have received for following our Guidelines of Success. If you have items you would like to donate please feel free to reach out to me : cooperkar@pcsb.org

I hope that you all have a wonderful Winter break and I can't wait to see what a fantastic semester 2 we have!



Book of the Month



Click the book cover to listen to the book!

LEARNER PROFILE OF THE MONTH

Open-Minded

We critically appreciate our own cultures and personal histories, as well as the values and traditions of others. We seek and evaluate a range of points of view, and we are willing to grow from the experience.

INQUIRY UNIT #3

PK3: HWO - Communities have similarities and differences.

VPK: HWO - Community helpers and transportation impact communities.

K: HWE - Culture is expressed through family traditions, celebrations, and holidays.

1: HWE - Symbols represent ideas and values.

2: WWA - Global citizens make contributions to their communities.

3: WWPT - Personal histories influence how citizens are involved in their community and beyond.

4: WWPT - Societies have past civilizations that shaped the places where we live.

5: HWE - Humans express their ideas and feelings from varied perspectives.

Congratulations to our November Inquirers of the Month!

PK3, VPK - Oliver T., Ja'Nyla V., Nevaeh B., Isabel L.

Kindergarten - Lincoln V., Alina S., Santiago S., Sophie S.

1st Grade - Ruby D., Xander J., Briannah D., Haydee P.

2nd Grade - Clara D., Tristan L., Omar A., Christian H., Grayson B.

3rd Grade - Xavier V., Harrison P., London V., Luke S.

4th Grade - Tony E., Josiah C., Brad B., Jarianna B.

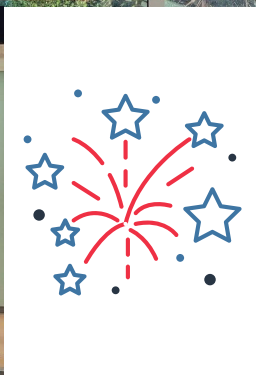
5th Grade - Melody G., Mikel C., Zoiey E., Axel G.

MHES PTA HAPPENINGS



PTA NEWS!

Thank you for attending our Veterans Day Program! Here are a few highlights from our event!



Upcoming PTA Events

December 14th Popcorn for Families at Winter Concert

January 24th PTA General Meeting
Literacy Night

February 12th - 16th Kindness Week
Spring Fundraiser starts

March 27th PTA General Meeting
PYP Exhibition / International Showcase



Connect
with PTA!



Memberships
T-shirts
Bundles
Donations

MHES SPECIALISTS



Mrs. Ingram's Counselor's Corner

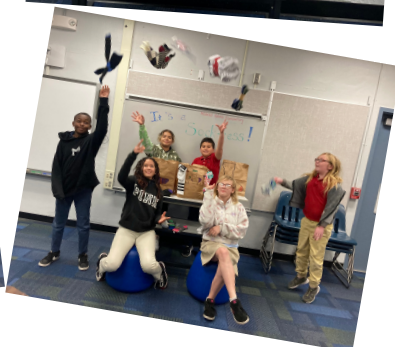
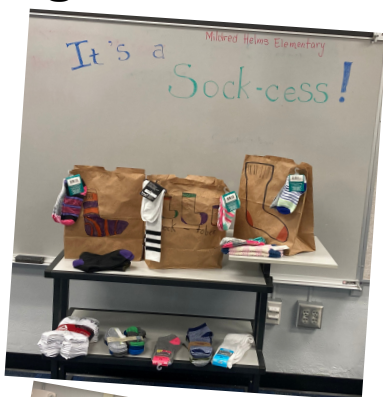
The SAVE Club's SOCK-tober Fest sock drive was a big SOCK-cess!

We collected 183 pairs of socks:
135 pairs for children and 48 pairs for adults.

4th Grade had the largest grade level collection with 52 pairs.

Socks will be donated to Clothes To Kids and Ellison Senior Living center in December.

Great job, Dolphins, showing your compassion and caring for our community!



Mrs. Clemens' Music Notes



Mrs. Carlson's Café Hola!



PYP SPANISH CLASS SYLLABUS **NOVEMBER-DECEMBER**
UNIT 3 "TRADICIONES FAMILIARES" (FAMILY TRADITIONS)

SOMOS INDAGADORES (INQUIRE) y con MENTALIDAD ABIERTA (OPEN MINDED)

Familia (Family):

- Papa (Dad)
- Mama (Mom)
- Hijo/Hija (Son/Daughter)
- Hermano/a (Brother/Sister)
- Abuelo (Grandpa)
- Abuela (Grandma)
- El Tio (Uncle)
- La Tia (Aunt)
- Primo/Prima (Cousin)

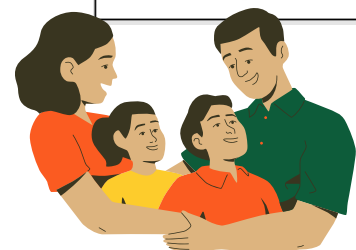
Animales/Animals

- Perro (dog)
- Gato (cat)
- Vaca (cow)
- Sapo (frog)
- Caballo (horse)
- Oveja (sheep)
- Pato (duck)
- Tortuga (turtle)
- Cerdo (pig)
- Conejo (bunny)
- Gallo (rooster)
- Gallina (hen)
- Pollito (chicken)



Números (Numbers):

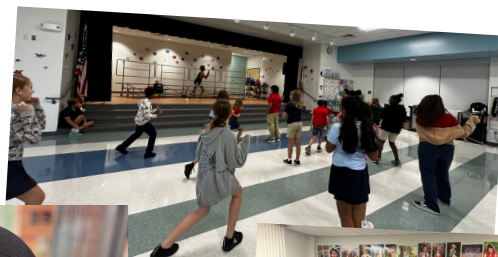
- | | |
|------------|-----------------|
| 1- uno | 16-dieciseis |
| 2-dos | 17-diecisiete |
| 3-tres | 18-dieciocho |
| 4-cuatro | 19-diecinueve |
| 5-cinco | 20-veinte |
| 6-seis | 21-veintiuno |
| 7-siete | 22-veintidos |
| 8-ochó | 23-veintitres |
| 9-nueve | 24-veinticuatro |
| 10-diez | 25-veinticinco |
| 11-once | 26-veintiseis |
| 12-doce | 27-veintisiete |
| 13-trece | 28-veintiocho |
| 14-catorce | 29-veintinueve |
| 15-quince | 30-treinta |



MHES COMMUNITY



Thank you for an amazing Great American Teach-In!



Thank you to our outstanding presenters!

Largo Library

Soul Fit

The Dali

Zumba down with Mary Brown

City of Largo Solid Waste

Dunedin Fine Arts

Baycare Childrens Wellness

Lina Kitsos

Johnston Jewelers

Bob Szelistowski

Summer Williams

Pinellas Animal Foundation

Jim Coil

Jessica Zizo

Kaley Pond

Benjamin Pond

Plumbing by Paul

Pastor Michael Carter

Kaleigh Moran

Ruth Velazquez

Leo McFee

Diane Stewart

Sunstar

Largo Police Department

Largo Fire Department

McGough Nature Park

Megan Loble

Pinellas County Animal Services

Dr. Bee Pediatric Dentistry

Caroline McMahon

Jack McMahon

Tampa Aquarium

USPS

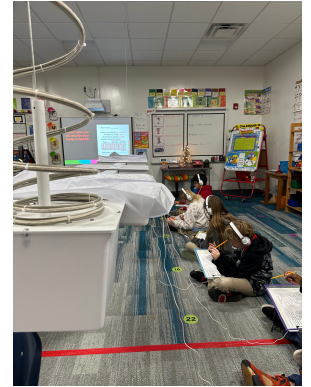
Clarence Davis

Jack Tenney

Susan Keller












Church of the Isles



MHES CALENDAR



December 2023

Sunday	Monday	Tuesday	Wednesday	Thursday	Friday	Saturday
					1	2
3 	4 National Cookie Day	5	6	7 Hanukkah Begins 	8 Vision & Hearing Screening Grades K, 1, 3	9 
10 Human Rights Day 	11	12 Gingerbread House Day 	13	14 Discovery Night Winter Concert 	15 Hanukkah Ends 	16
17	18	19 Enterprise Village 5th Grade	20 1st Grade field Trip	21 End of 2nd Quarter	22 Winter Break Begins! No School for Students	23
24 31	25 Christmas Day 	26 Kwanzaa Begins 	27	28	29	30

WINTER BREAK
12/22/23 - 1/7/24
STUDENTS RETURN 1/8/2024



Visit us at <https://www.pcsb.org/mildred-es>
for the most up to date information!

